

CUSTOMER : _____
 DESCRIPTION: AC ADAPTOR _____
 MODEL NO. : DP35-1200100 _____
 PART NO. : AD1210BB3 _____
 DAVID NO. : C169-12 _____
 ISSUE DATE: 2009/10/29 _____

FOR APPROVAL SHEET

<p>1. According to our ISO-9002 system, We cannot process your P.O before you approve this specification by signing, stamping and returning the “Declaration of approval” Section of this page.</p> <p>2. This document is property of ATL Technology LC(SCI) is prepared for the use of _____. Disclosure or distribution of part or whole of this document without the written permission of ATL Technology LC(SCI) is strictly prohibited.</p>	
<p>The whole specification including this and the following pages have been carefully studied and accepted and approved by us with no query.</p> <p>Page 2: Electrical Specification Page 3: Mechanical drawing Page 4: Construction Drawing Page 5: Materials List Page 6: Package Page 7: Label specification Page 8: Sample test report</p>	<p><u>Client's Declaration of Approval</u></p> <p>Authorized Signature & Company</p> <p>Name :</p> <p>Title :</p> <p>Date :</p>

ATL Technology LC (SCI)

1335 West 1650 North Springville, UT 84663, U.S.A

TEL: 801-7659852

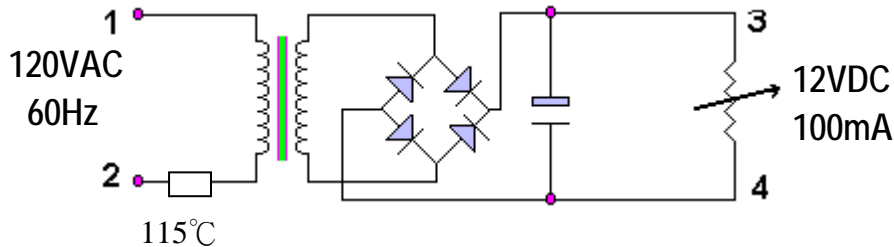
FAX: 801-765-9082

ATL Technology LC (SCI)

MODEL NO.	DESCRIPTION	DAVIDNO.	PART NO.	ISSUE DATE
DP35-1200100	AC ADAPTOR	C169-12	AD1210BB3	2009/10/29

1. Part: EI-35

2. Current Diagram:



3. Construction:

3.1 Surface: Damage. Rusting. Foam (Flow or Air) not Permitted.

3.2 Lead tension test: Lead must be withstand a pull 1.5 kg for 30 seconds.

4. Characteristics:

4.1 Primary rated voltage and frequency: 120 VAC 60 Hz

4.2 Secondary rating :with Tolerance ,At Input Voltage 120 VAC, 60 Hz

TEST POINT	Rated Voltage	Rated Current	Voltage Regulation	No Load Voltage
3-4	12VDC $\pm 5\%$	DC 100mA		18 VDC MAX

4.3 Exciting Current: Input Primary 120 V 60 Hz 65 mA MAX.(No Load)

4.4 Hi-Pot test: Apply 1500 VAC 3 mA 60 Seconds between the Primary to Secondary and between Primary to Core.

Apply 500 VAC , 3 mA 60 Seconds between Secondary to core. .

Insulation test: 500 V DC 100 M Ω min, between winding to winding and core.

4.5 Humidity test: Temp 25 \pm 5 $^{\circ}$ C relative humidity 91~95 % RH for 6 hours. After Keeping 30 minutes following insulation must be larger than 5.0 M Ω .

4.6 Temperature test: Less than 75 $^{\circ}$ C for rated test with Resistance method.

4.7 Operating temperature : 0 ~ 50 C.

4.8 Full Load Temperature Range:0 $^{\circ}$ Cto+50 $^{\circ}$ C Storage Temperature Range:-40 $^{\circ}$ Cto+70 $^{\circ}$ C

5. Adequate Standard: UL/CUL

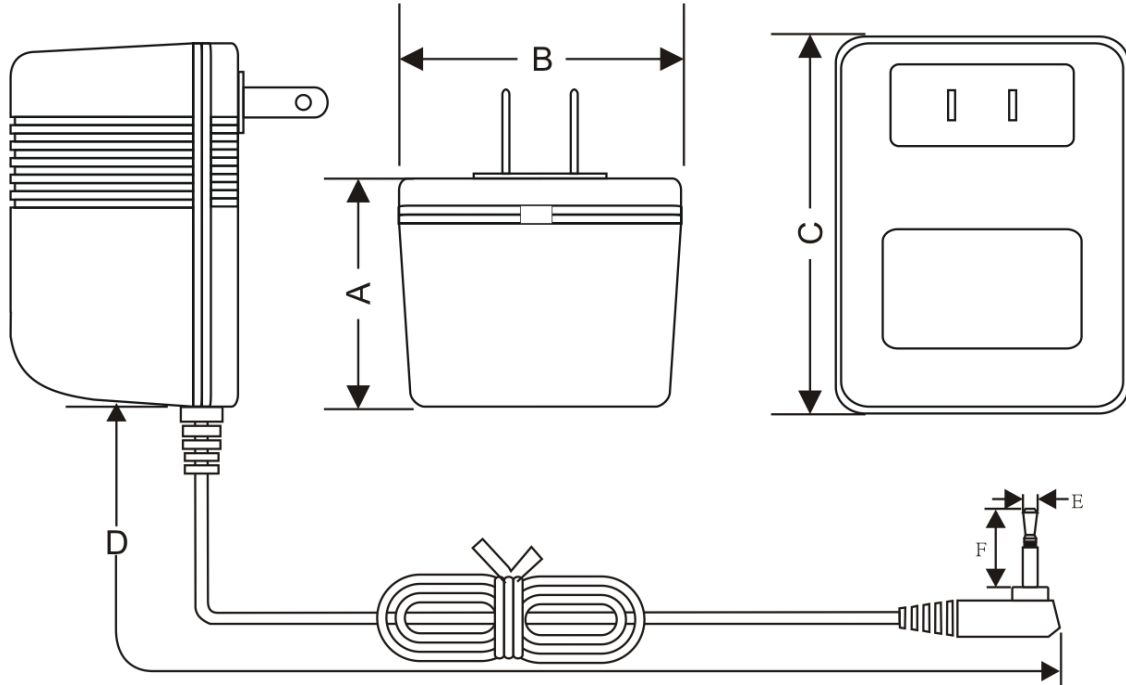
APPROVED BY		ATL Technology LC(SCI)	
CHECKED BY		1335 West 1650 North Springville, UT 84663,U.S.A	
REPORTED BY		TEL:801-7659852	FAX:801-765-9082

ATL Technology LC (SCI)

MODEL NO.	DESCRIPTION	DAVIDNO.	PART NO.	ISSUE DATE
DP35-1200100	AC ADAPTOR	C169-12	AD1210BB3	2009/10/29

Enclosure Colour : Black

DC Cord Colour : Black



A	38.5±1	B	43.6±1	C	56.0±1
D	1800±100	F	11.5±0.3	E	2.5±0.1

DRAWING NAME		ATL Technology LC(SCI)	
UNIT		1335 West 1650 North Springville, UT 84663,U.S.A	
SCALE		TEL:801-7659852	FAX:801-765-9082

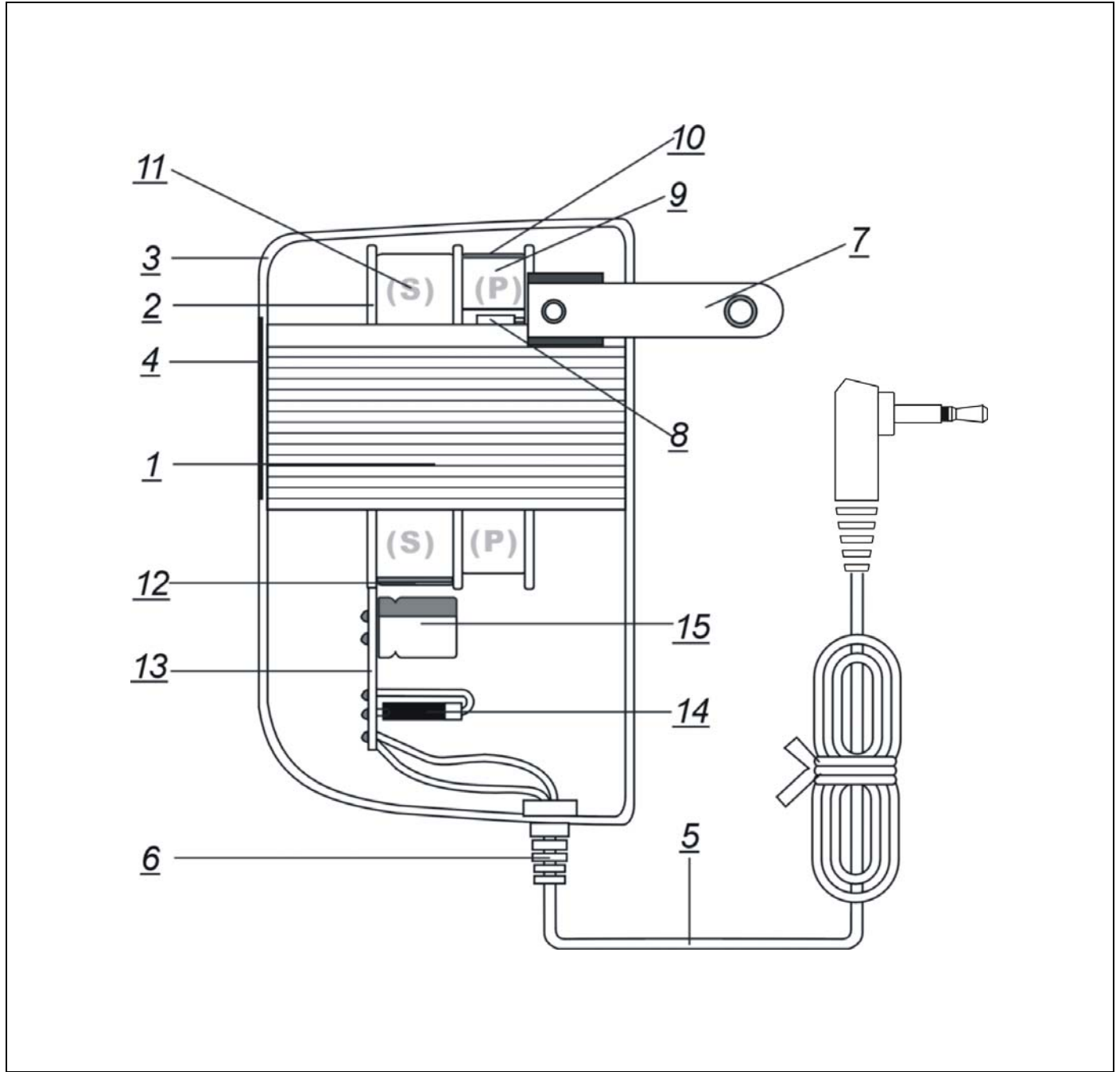
APPROVED BY:

CHEKED BY:

REPORTED BY:

ATL Technology LC (SCI)

MODEL NO.	DESCRIPTION	DAVIDNO.	PART NO.	ISSUE DATE
DP35-1200100	AC ADAPTOR	C169-12	AD1210BB3	2009/10/29



DRAWING NAME	ATL Technology LC(SCI)		
UNIT	1335 West 1650 North Springville, UT 84663,U.S.A		
SCALE	TEL:801-7659852	FAX:801-765-9082	

APPROVED BY:

CHEKED BY:

REPORTED BY:

ATL Technology LC (SCI)

MODEL NO.	DESCRIPTION	DAVIDNO.	PART NO.	ISSUE DATE
DP35-1200100	AC ADAPTOR	C169-12	AD1210BB3	2009/10/29

NO	DESCRIPTION	MATERIAL	SPEC & Q'TY	MANUFACTURER
01	Core	Silicon Steel	<u> 2 </u> H50	SHEN ZHEN CHUN YUAN STEEL INC (CERTIFICATE No.: 99PC 100616) OR EQUIVALENT
02	Bobbin	35*12	<u> 1 </u> PCS.	SON KON Plastic & METAL MANUFAC TURIN OR EQUIVALENT.
03	Enclosure	ABS	<u> 1 </u> SET.	As Item 2.
04	Nameplate	PVC (UL/CSA) 0.27mm Thick	<u> 1 </u> PCS.	Chi Yang Printing Mtg. OR EQUIV.
05	Output Cord	UL2468(UL/CSA) AWG24 1.8M Plug:2.5*11.5mm PVC.	<u> 1 </u> PCS.	TAHENG ELECTRONICS WIRE & CABLE CO., LTD. (E50032) OR EQUIVALENT
06	Strain Relief	Nickel plating Copper 1.45mm Thick	<u> 1 </u> SET.	As Item 5.
07	Blade	115°C 250V 2A	<u> 1 </u> PCS.	As Item 1.
08	Thermal Cutoff Fuse.	Polyurethane Enameled Copper Wire		JOINT FORCE METAL RESEARCH & Co., LTD. (E142267) OR EQUIVALENT
09	The Primary Winding	Polyester Tape.	05mm <u> 2 </u> Turns.	FENG CHING METAL CORP. (E172395) OR EQUIVALENT
10	The Primary Insulation	Press Board		KA SHING ENTERPRISE Co., LTD. OR EQUIVALENT
11	The Secondary Winding.	Polyurethane Enameled Copper Wire.		As Item 9.
12	The Secondary Insulation.	Polyester Tape.	0.05mm <u> 2 </u> Turns. 0.05mm <u> 1 </u> PCS	As Item 10
13	Rectifier Board.	P.C.B (94V-0)	<u> 1 </u> PCS	HUA SHENG ELECTRONICS Co., LTD. OR EQUIVALENT
14	Diode	1N4001	<u> 4 </u> PCS.	BYTESONIC CORPORATION OR EQUIVALENT
15	Capacitor.	470µF/25V 85°C	<u> 1 </u> PCS.	TAY JYE ELECTRONICS FACTORY OR EQUIVALENT

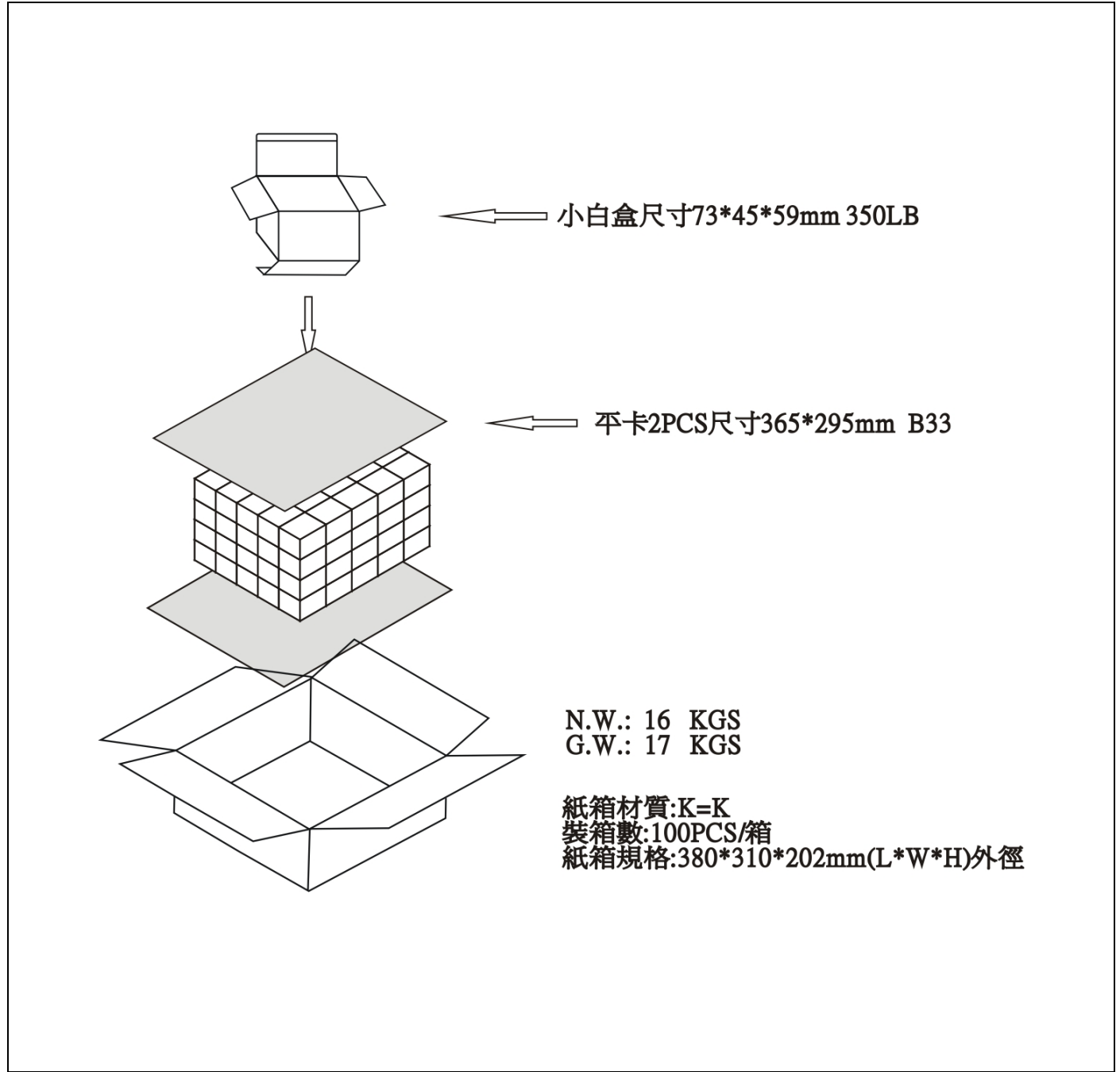
--	--	--

DRAWING NAME		ATL Technology LC(SCI)
UNIT		1335 West 1650 North Springville, UT 84663, U.S.A
DRAWING NAME		TEL:801-7659852 FAX:801-765-9082

APPROVED BY: _____ CHEKED BY: _____ REPORTED BY: _____

ATL Technology LC (SCI)

MODEL NO.	DESCRIPTION	DAVIDNO.	PART NO.	ISSUE DATE
DP35-1200100	AC ADAPTOR	C169-12	AD1210BB3	2009/10/29



DRAWING NAME		ATL Technology LC(SCI)	
DRAWING NO.		1335 West 1650 North Springville, UT 84663, U.S.A	
UNIT		TEL:801-7659852 FAX:801-765-9082	
SCALE			

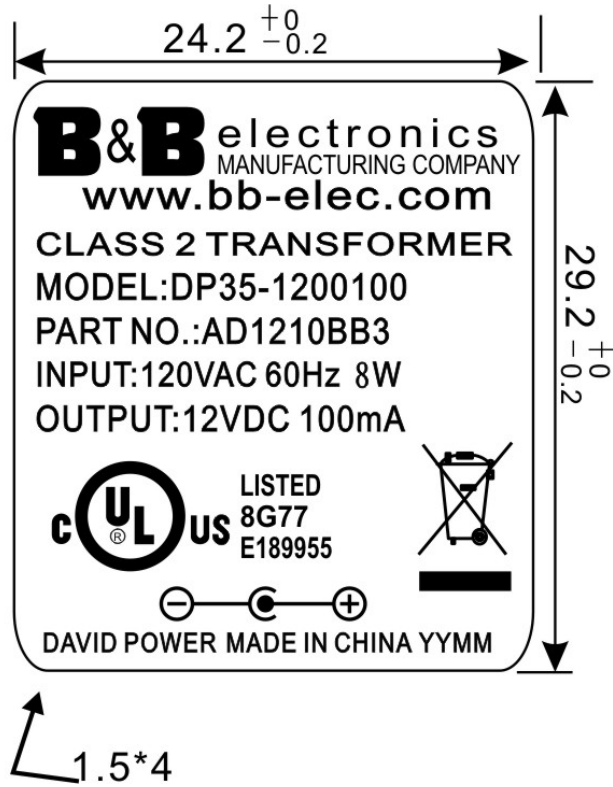
APPROVED BY:

CHEKED BY:

REPORTED BY:

ATL Technology LC (SCI)

MODEL NO.	DESCRIPTION	DAVIDNO.	PART NO.	ISSUE DATE
DP35-1200100	AC ADAPTOR	C169-12	AD1210BB3	2009/10/29



NOTE:

1. Material: P.V.C 0.27mm Thickness, UL/CSA certificate and fireproof.
2. Color: Silver Word and Black Under Plate.
- 3.YY provide year MM Provide month
- 4.Unit:mm

APPROVED BY		ATL Technology LC(SCI)	
CHECKED BY		1335 West 1650 North Springville, UT 84663, U.S.A	
REPOTED BY		TEL:801-7659852	FAX:801-765-9082

ATL Technology LC (SCI)

MODEL NO.	DESCRIPTION	DAVIDNO.	PART NO.	ISSUE DATE
DP35-1200100	AC ADAPTOR	C169-12	AD1210BB3	2009/10/29

I T E M	S P E C	S A M P L E						
		1	2	3	4	5	6	7
PRIMARY EXCITING CURRENT I/P 120 VAC 50/60 Hz	65 mA MAX							
PRIMARY LOAD CURRENT I/P 120 VAC 50/60 Hz	mA MAX							
SECONDARY VOLTAGE NO LOAD :	DC 18 V MAX							
SECONDARY VOLTAGE LOAD : DC 100 mA	DC 12 V ±5%							
PRIMARY EXCITING CURRENT I/P VAC Hz								
PRIMARY LOAD CURRENT I/P VAC Hz								
SECONDARY VOLTAGE NO LOAD :								
RIPPLE (Vp-p)								
HI-POT	PRI. TO SEC-CORE	AC 1500 V						
	SEC. TO CORE	AC 500 V						

APPROVED BY		ATL Technology LC(SCI)
CHECKED BY		1335 West 1650 North Springville, UT 84663,U.S.A
REPOTED BY		TEL:801-7659852 FAX:801-765-9082