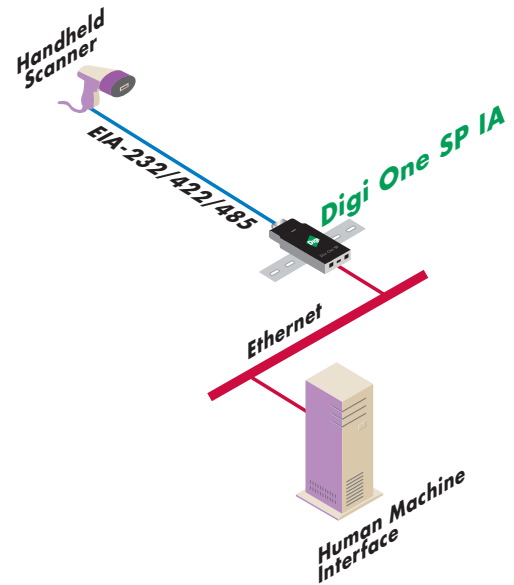


Digi One™ SP IA

Device Server

The Digi One SP IA device server is designed for entry level EIA-232/422/485 serial-to-Ethernet connectivity for industrial automation applications.



Features/Benefits

- > Patented Digi RealPort® technology for COM or TTY port control and management
- > Switch selectable EIA-232/422/485 for simple interfacing to any type of serial device
- > TCP/UDP Socket Services for broad device connectivity and application use
- > Easy configuration through Web interface (HTTP)
- > Modem emulation allows support for devices designed only for modem communications
- > DIN Rail and wall mount kits for flexible mounting options
- > 9-30 VDC power with bare-wire "pigtail" for direct connection included
- > RFC 2217 support

Overview

The Digi One SP IA device server allows virtually any industrial device with a serial port to easily connect to the Ethernet. The compact device server features one EIA-232/422/485 DB-9 serial port, 9-30 VDC input and DIN Rail kit, making it an optimum solution for many industrial automation applications. The Digi One SP IA provides a reliable interface to OPC servers or to other IA equipment such as bar-code readers, scales or temperature sensors.

The Digi One SP IA supports most industrial automation protocols through serial tunnelling, TCP/UDP connections, or Digi's patented RealPort software. RealPort makes it possible to establish a connection between the host and networked serial device by creating a local COM or TTY port on the host computer, allowing existing software applications to work without modification.

The Digi One SP IA is easy to install locally or remotely through a variety of IP addressing methods, including DHCP, RARP, and ARP-Ping. Included on the installation CD is an application that will automatically detect all Digi One SP IA devices on your network. A quick-start guide is also provided to make network configuration easy and hassle-free.

Digi International, the leader in Connectware, makes device networking easy by developing products and technologies that are cost-effective and easy to use. With over 20 million ports shipped worldwide, Digi has been offering the highest levels of performance, flexibility, and quality since 1985.



Connectware™

www.digi.com

Making
DEVICE NETWORKING
easy™

Features/Specifications

FEATURES

- EIA-232/422/485 switch selectable
- DB-9M serial connector
- Baud rates up to 230 Kbps
- DIN Rail and wall mount kit
- 9-30 VDC input
- Bare-wire "pigtail" power connector
- Full modem and hardware flow control
- Modem emulation
- 10/100Base-T Ethernet support
- TCP/UDP Socket Services
- UDP Multicast
- Telnet and Reverse Telnet
- DHCP/RARP/ARP-Ping for IP address assignment
- HTTP configuration
- Patented RealPort technology for COM and TTY ports
- LED status for link and power

OPERATING SYSTEMS

RealPort drivers for COM/TTY support

- AIX
- HP-UX
- Linux
- Windows® 98/98SE
- Windows ME
- Windows XP
- Windows 2000
- Windows Server™ 2003
- Windows NT®
- SCO® OpenServer™
- SCO UnixWare™
- Solaris™ (Intel)
- Solaris (SPARC)

POWER REQUIREMENTS

- Ships with a 110/240 VAC power supply that provides 12VDC @ 0.4 Amps max
- Input power supports 9-30VDC @ 0.5Amps max
- Additional bare-wire "pigtail" power connector included

REGULATORY APPROVALS

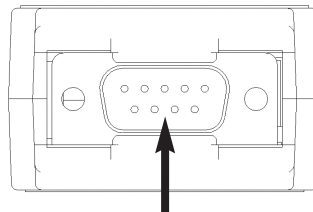
- FCC Part 15 Subpart B, Class A
- EN55022, Class A
- EN55024
- EN61000-3-2,3
- UL60950
- CAN/CSA C22.2 No.60950
- EN60950

ENVIRONMENTAL

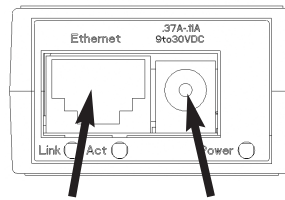
- Ambient temperature: 10° C to 45° C (50° F to 131° F)
- Relative humidity: 5% to 90% (non-condensing)

DIMENSIONS

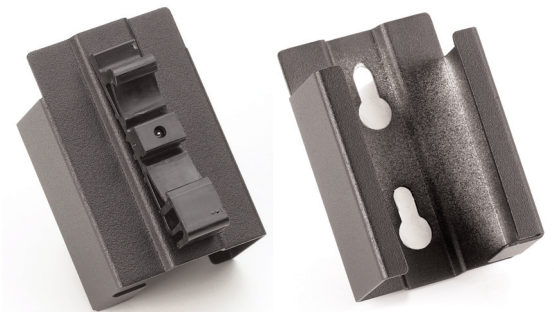
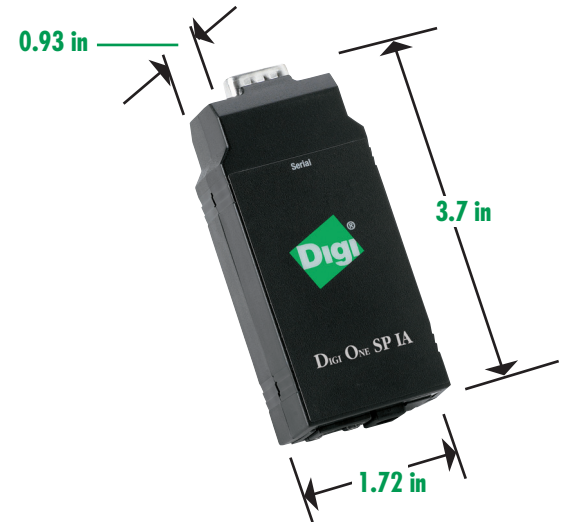
- Length: 3.7 in (9.4 cm)
- Width: 1.72 in (4.3 cm)
- Depth: 0.93 in (2.3 cm)
- Weight: 2.29 oz (65 g)



DB-9M connector



Ethernet Power



DIN Rail and wall mount brackets included

MODEL.....PART NUMBERS

Model	North America	International
Digi One SP IA	70001999	70002000
Accessories		
DB-9F to DB-9F cross-over cable (4 ft.)	76000642	76000642
Replacement 120-240VAC input power supply (Domestic & International)	76000654	76000654

DIGI SERVICE AND SUPPORT

You can purchase with confidence knowing that Digi is here to support you with expert technical support and a strong five-year warranty. <http://support.digi.com>

Digi International

11001 Bren Road E.
Minnetonka, MN 55343
U.S.A.
PH: 877-912-3444
952-912-3444
FX: 952-912-4952
www.digi.com

Digi International GmbH

Joseph-von-Fraunhofer Str. 23
D-44227 Dortmund
Germany
PH: +49-231-9747-0
FX: +49-231-9747-111
www.digi.de

Digi International (HK) Limited

Suite 1703-05, 17/F.,
K Wah Centre
191 Java Road
North Point, Hong Kong
PH: +852-2833-1008
FX: +852-2572-9989
www.digi.cn

www.digi.com

email:
info@digi.com



© 2004 Digi International Inc.

All rights reserved. Digi, Digi International, the Digi logo, the Digi Connectware logo, Digi One and RealPort are either trademarks or registered trademarks of Digi International Inc. in the United States and other countries worldwide. All other trademarks are the property of their respective holders.

91001269
A1/604

Connectware™